

55/135

135

SEE SHEET 7 OF 7

DRAWING NUMBER

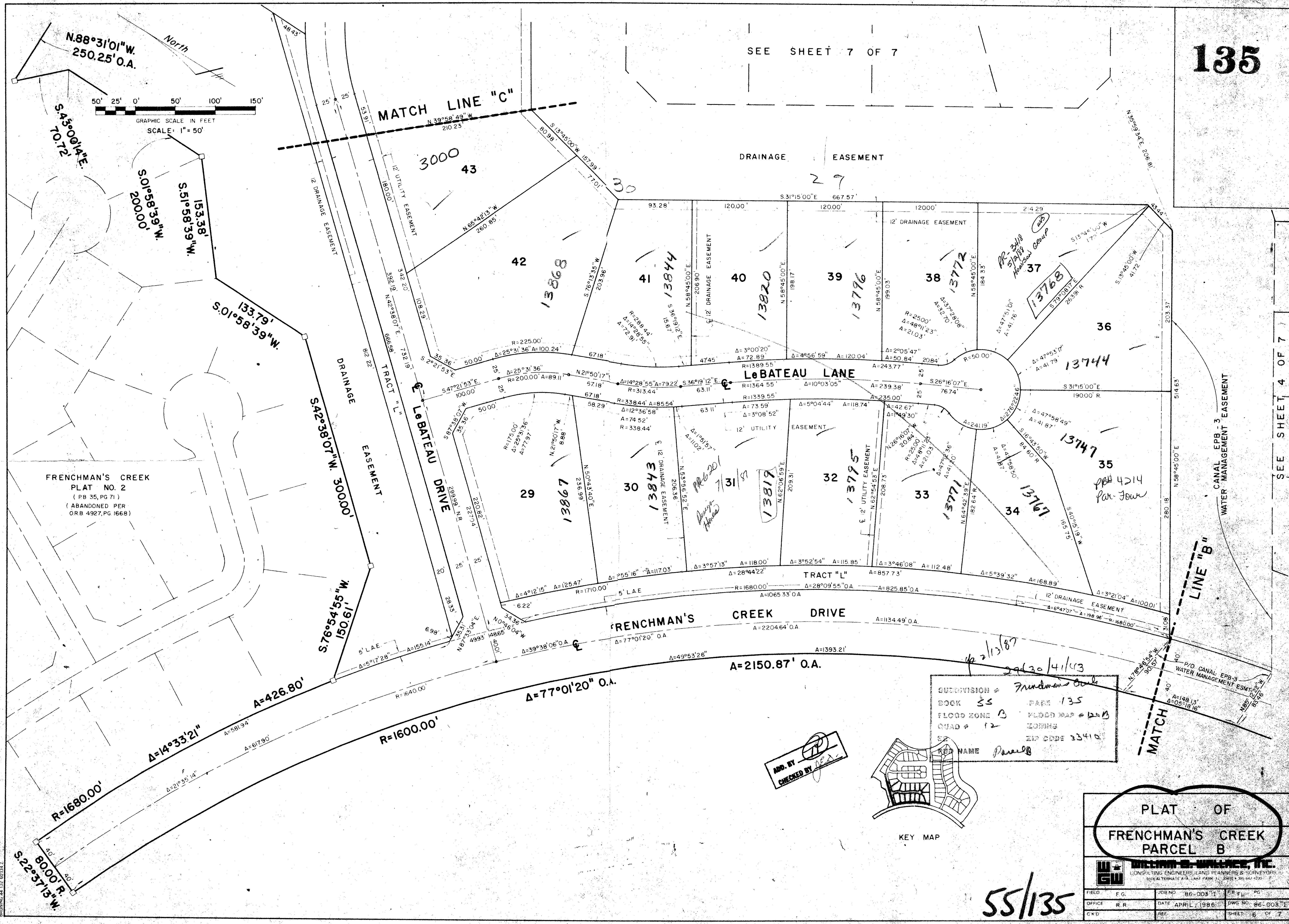
DRAWING NUMBER

DRAWING NUMBER

PLAN-HOLD CORPORATION • IRVINE, CALIFORNIA
REGISTERED PROFESSIONAL ENGINEER
REGISTERED PROFESSIONAL SURVEYOR
REGISTERED PROFESSIONAL LAND PLANNER

PLAN-HOLD CORPORATION • IRVINE, CALIFORNIA
REGISTERED PROFESSIONAL ENGINEER
REGISTERED PROFESSIONAL SURVEYOR
REGISTERED PROFESSIONAL LAND PLANNER

PLAN-HOLD CORPORATION • IRVINE, CALIFORNIA
REGISTERED PROFESSIONAL ENGINEER
REGISTERED PROFESSIONAL SURVEYOR
REGISTERED PROFESSIONAL LAND PLANNER



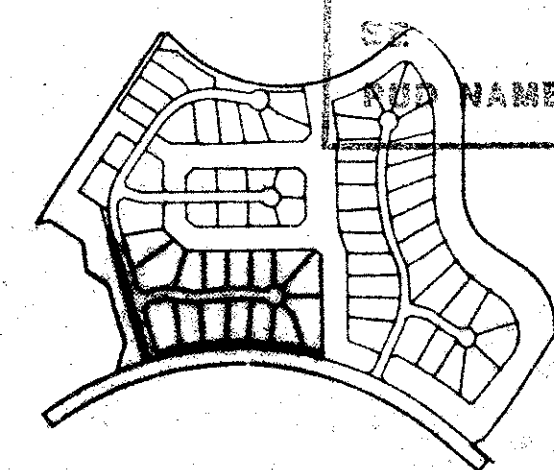
FRENCHMAN'S CREEK
PLAT NO. 2
(PB 35, PG 71)
(ABANDONED PER
ORB 4927, PG 166B)

4/2/13/87
2/20/4/13

GUYMONSIVISION # Frenchman's Creek
BOOK 55 PAGE 135
FLOOD ZONE B FLOOD MAP # 120B
QUAD # 12 ZONING
ZIP CODE 33410

NAME Parrell

APP. BY [Signature]
CHECKED BY [Signature]



PLAT OF
FRENCHMAN'S CREEK
PARCEL B

WILLIAM E. WALLACE, INC.
CONSULTING ENGINEERS, LAND PLANNERS & SURVEYORS
3516 ALTERNATE AVE., LAKE PARK, FL 33410-3042-0200

FIELD	F.G.	JOB NO.	86-003-1	P.R.	PC
OFFICE	R.R.	DATE	APRIL 1986	DWG NO.	86-003-1
CK'D	REF.	SHEET	6	OF	7

55/135

SEE SHEET 4 OF 7